

**KRYPTON R**Edition: 11.23 Valid
until: 11.24

Deliver to:

Name:

Street:

Town:

E-Mail:

Tel:

Postal code:

Fax:



Deliver to:

Name:

Street:

Town:

E-Mail:

Tel:

Postal code:

Fax:

Order date:

Purchase order:

Number required:

Marked for:

Sunrise order no:

● = Standard

□ = Cost option

./ = Price reduction

○ = No cost option

☐ Order ☐ Calculation ☐ Built 4 me (longer leadtime)

Art. no.: 770 00 001

Max. user weight:

125 kg

USER WEIGHT

kg

Mandatory information to ensure correct configuration

Base Price

5.733 €

KRYPTON R: STANDARD CONFIGURATION**KRYPTON R**

- Rigid wheelchair
- Carbon fibre frame
- Adjustable back angle
- Foldable backrest
- Adjustable COG
- Rear seat height adjustable +/- 1cm
- Carbon fibre axle-stems
- Carbon fibre axle tube

For more information
www.SunriseMedical.eu
© Sunrise Medical 2024

Krypton R

● = Standard ○ = No cost option □ = Cost option

CLIENT MEASUREMENTS (all measurements without cushion)

SEAT WIDTH SELECTION - in mm; measured from outside frame tube to outside frame tube

320	340	360	380	400	420	440	460
○	○	○	○	○	○	○	○

SEAT DEPTH SELECTION - in mm

340	360	380	400	420	440	460	480
○	○	○	○	○	○	○	○

FRONT SEAT HEIGHT SELECTION - in dependance of front castor size, fork, frame height version
The high frame is 40 mm higher than the low frame.

		Front seat height in mm													
Front Caster	Fork (length)	Frame:	430	440	450	460	470	480	490	500	510	520	530	540	550
			○	○	○										
	3"	low			○	○	○								
							○								
								□	□						
		high	□	□	□										
							○	○	○						
									○	○	○				
											□	□			
	4"	low		○	○	○	○								
					□	□	□	□							
							□	□	□						
				□	□	□	□								
		high					○	○	○	○					
								□	□	□	□				
											□	□	□		
								□	□	□					
	5"	low				○	○	○							
							□	□	□						
								□	□	□					
						□	□	□							
		high							○	○	○				
											□	□	□		
												□	□	□	
										□	□	□			
	6"	high										□	□	□	
													□	□	□

REAR SEAT HEIGHT SELECTION - in dependance of rear wheel size

The rear seat height is adjustable ± 10 mm.

The rear seat height can only be between 0 cm and 110 mm below the selected front seat height.

Caution: with rear seat heights 460 mm and above, the width between the sideguards increases by 35 mm

Rear seat height in mm

Rear Wheels	380	390	400	410	420	430	440	450	460	470	480	490	500
24"	○ ⁽¹⁾	○ ⁽²⁾	○ ⁽²⁾	○	○	○	○	○	○	○	○	○ ⁽³⁾	
25"		○ ⁽¹⁾	○ ⁽²⁾	○ ⁽²⁾	○	○	○	○	○	○	○	○	○ ⁽³⁾

(1): No adjustment of rear seat-height possible

(2): No downwards-adjustment of rear-seat-height possible. Only +1 cm adjustable.

(3): No upwards-adjustment of rear-seat-height possible. Only -1 cm adjustable.

For more information

www.SunriseMedical.eu

© Sunrise Medical 2024

WEIGHT

We want to be very transparent on weight. The following information will be a guide to the lightest possible Krypton R: how to achieve a 6,2 kg wheelchair, and how to order the lightest possible configuration for your Krypton R

Krypton R: 6,2 kg configuration Transport weight: 3,7 kg

Frame: high frame, 92°, 30 mm inset, seat width: 360 mm, seat depth: 400 mm. Seat height: front 470 mm, rear 420 mm. Seat-sling Airflow superlight.

Wheel-lock : lightweight compact wheel-lock

Footrest: tubular footrest



Backrest: Carbon backrest, EXO superlight backrest-upholstery, without push-handles

Sideguards: Carbon fibre, slim-style

Rear wheels: 24" Proton wheels with Aluminium handrims (coated or anodized) and Schwalbe One tyres

Forks and casters: 111 mm carbotechnology fork, 3" caster

Please mind that there is a 5% tolerance on all weight specifications due to weight deviations on mounting parts (tyres, caster-wheels etc.)

LIGHTWEIGHT-GUIDE FOR ORDERING THE KRYPTON R

Sunrise Medical offers a wide variety of options for the Krypton R to suit every user's needs. However, most options add significant weight to the wheelchair. To make this more transparent when filling in the order-form, and to assist you in ordering the lightest possible wheelchair, we indicate the approximate weight-increase of the options on the order form:

- (L)** indicates the lightest possible option within the range of options
- (+)** indicates that this option adds more than 500 g to the wheelchair's weight compared to the lightest option within the range

LIGHTWEIGHT OPTIONS FOR THE KRYPTON R

We developed several options for the Krypton R to save weight on the chair without sacrificing daily-use suitability, comfort or durability



Carbon backrest (KRR030006): full carbon backrest with very close cross-tube (20mm crosstube to backrest-upholstery) (-100 g compared to Standard backrest)



Seat sling "airflow" superlight (KRR020019): fully adjustable seat-sling with composite buckles and lighter straps (max. user weight 85 kg) (-100 g compared to seat sling "airflow")



EXO superlight (KRR030005): lightweight version of the EXO backrest upholstery. EVA-foam padding, adjustable straps, wider cut of the upholstery to cover backrest tubes. (-160 g compared to Std. EXO backrest-upholstery)



Axle-plug superlight (KRR070049): (only 0° camber): glued into the axle-tube, no adjustability of the track-width possible (-160 g compared to width-adjustable axle-plug KRR070600 / 603)

Please follow this measuring method:

The following method is recommended on the basis of extensive practical experience. Deviations are possible in individual instances.

Seat width (SW):

- a) *For the user:* Allow space between sideguard and hip on each side of the chair (approx. 10 - 20 mm altogether)
- b) *On the wheelchair:* From outside frame tube to outside frame tube.

Seat depth (SD):

- a) *For the user:* When sitting upright: leave space for 2 - 3 fingers between front edge of the seat upholstery and back of knee (approx. 30 - 60 mm). Care must be taken with adj. upholstery.
- b) *On the wheelchair:* From back tube to front of seat upholstery.

Front seat height:

- a) *For the user:* When sitting with 90° kneeangle: From back of knee to bottom of shoe sole.
- b) *On the wheelchair:* From front of seat tube to the ground . (min. 30 mm longer than user measurement)
Remember to include the cushion height.

Rear seat height:

- b) *On the wheelchair:* From back of seat tube to the ground.
Note: Max. seat height difference rear to front is 130 mm

Back height:

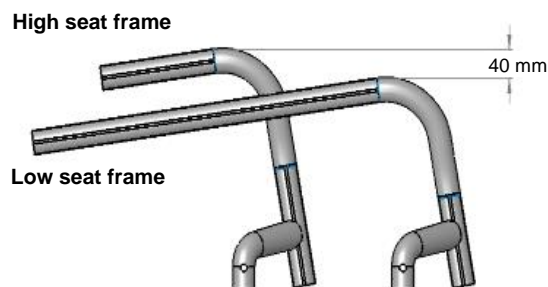
- a) *For the user:* From the seat, including cushion, to be no more than 10 - 20 mm below the lower shoulder blade.
- b) *On the wheelchair:* From back of seat tube to upper edge of backrest upholstery.
Note: The user's ability to sit upright has a major influence on the back height and it can therefore differ considerably

Back angle:

Important: The back height depends on the degree of disability.
0° is the angle 90° to the seat. Negative angles are <90° and positive angles are >90°.

Low Seat Frame vs. High Seat Frame:

The high frame is 40 mm higher than the low frame. So you can choose shorter and lighter forks to minimize the weight of your wheelchair.



Technical Data Overview:

Max. overall height:	950 mm	Max. overall width:	Camber	24" rear wheel	25" rear wheel
Max. overall length:	930 mm		For 0° camber:	SW + 170 mm	SW + 170 mm
Max. turning circle:	700 mm		For 3° camber:	SW + 230 mm	SW + 240 mm
Max. safe slope:	7°				
Wheelchair weight:	from 6,2 kg				
Dismantled weight:	from 3,7 kg				
Weight of heaviest part:	2,1 kg				

All changes in the configuration might change the seat heights.
Manufacturing tolerances are +/- 10 mm for all measurements.

Krypton R

● = Standard ○ = No cost option □ = Cost option

Price in €

SEAT UPHOLSTERIES AND CUSHIONS

Seat Sling

KRR020012	○ Seat sling "airflow" with 1 utility bag	-
KRR020017	□ Seat sling "airflow" with 2 utility bags	53 €
KRR020018	□ Seat sling "airflow" with utility bag and catheter bag (from SW 340mm)	53 €
KRR020019	□ Seat sling "airflow" superlight. Without bags, max user weight 85kg (1) (L)	182 €
KRR020000	○ Without seat sling	-

Seat cushion black cover

Foam: (medium soft)	Thickness: KRR020101 □ 30 mm KRR020102 □ 50 mm	110 €
Latex: (very soft)	Thickness: KRR020103 □ 50 mm	110 €

JAY Cushions - for complete product range see Jay order forms

JAY020002	□ JAY Basic	155 €
JAY020003	□ JAY Soft Combi P	227 €
JAY020001	□ JAY Easy Visco, Curved Base	333 €
JAY020007	□ JAY Easy Fluid, Curved Base	573 €
JAY020004	□ JAY Lite	525 €

Seat accessories

KRR090018	□ Positioning belt (only with Standard backrest)	83 €
-----------	--	------

BACKREST

KRR030001	<div><div><div><div></div></div><div>Standard backrest (aluminium, black)</div></div><div><div>Choose back height factory setting (mm).</div><div>Height adjustments possible in the range 250-300; 300-400; 400-450 mm.</div></div></div> <div><table><tr><th>250 - 300</th><th>300 - 350</th><th>350 - 400</th><th>400 - 450</th></tr><tr><td><div><div></div><div>250</div></div></td><td><div><div></div><div>300</div></div></td><td><div><div></div><div>350</div></div></td><td><div><div></div><div>400</div></div></td></tr><tr><td><div><div></div><div>275</div></div></td><td><div><div></div><div>325</div></div></td><td><div><div></div><div>375</div></div></td><td><div><div></div><div>425</div></div></td></tr><tr><td><div><div></div><div>300</div></div></td><td><div><div></div><div>350</div></div></td><td><div><div></div><div>400</div></div></td><td><div><div></div><div>450</div></div></td></tr></table></div>	250 - 300	300 - 350	350 - 400	400 - 450	<div><div></div><div>250</div></div>	<div><div></div><div>300</div></div>	<div><div></div><div>350</div></div>	<div><div></div><div>400</div></div>	<div><div></div><div>275</div></div>	<div><div></div><div>325</div></div>	<div><div></div><div>375</div></div>	<div><div></div><div>425</div></div>	<div><div></div><div>300</div></div>	<div><div></div><div>350</div></div>	<div><div></div><div>400</div></div>	<div><div></div><div>450</div></div>	-
250 - 300	300 - 350	350 - 400	400 - 450															
<div><div></div><div>250</div></div>	<div><div></div><div>300</div></div>	<div><div></div><div>350</div></div>	<div><div></div><div>400</div></div>															
<div><div></div><div>275</div></div>	<div><div></div><div>325</div></div>	<div><div></div><div>375</div></div>	<div><div></div><div>425</div></div>															
<div><div></div><div>300</div></div>	<div><div></div><div>350</div></div>	<div><div></div><div>400</div></div>	<div><div></div><div>450</div></div>															
KRR030006	<div><div><div></div></div><div>Carbon backrest - fixed height, crosstube very close to the upholstery, "Krypton" rubber grip (2) (L)</div><div><div>Choose back height (mm)</div><div>no height adjustment possible.</div></div></div> <div><table><tr><td><div><div></div><div>250</div></div></td><td><div><div></div><div>325</div></div></td><td><div><div></div><div>400</div></div></td></tr><tr><td><div><div></div><div>275</div></div></td><td><div><div></div><div>350</div></div></td><td><div><div></div><div>425</div></div></td></tr><tr><td><div><div></div><div>300</div></div></td><td><div><div></div><div>375</div></div></td><td><div><div></div><div>450</div></div></td></tr></table></div>	<div><div></div><div>250</div></div>	<div><div></div><div>325</div></div>	<div><div></div><div>400</div></div>	<div><div></div><div>275</div></div>	<div><div></div><div>350</div></div>	<div><div></div><div>425</div></div>	<div><div></div><div>300</div></div>	<div><div></div><div>375</div></div>	<div><div></div><div>450</div></div>	508 €							
<div><div></div><div>250</div></div>	<div><div></div><div>325</div></div>	<div><div></div><div>400</div></div>																
<div><div></div><div>275</div></div>	<div><div></div><div>350</div></div>	<div><div></div><div>425</div></div>																
<div><div></div><div>300</div></div>	<div><div></div><div>375</div></div>	<div><div></div><div>450</div></div>																
KRR030012	<div><div><div></div></div><div>Backrest, angle-adjustable (non foldable)</div><div><div><div><div></div></div><div><div></div></div></div><div><div><div></div></div><div><div></div></div></div></div><div><div><div></div></div><div><div></div></div></div><div><div><div></div></div><div><div></div></div></div></div> <div><div><div></div></div><div><div></div></div></div> <div><div><div></div></div><div><div></div></div></div> <div><div><div></div></div><div><div></div></div></div> <div><div><div></div></div><div><div></div></div></div> <div><div><div></div></div><div><div></div></div></div> <div><div><div></div></div><div><div></div></div></div> <div><div><div></div></div><div><div></div></div></div> <div><div><div></div></div><div><div></div></div></div> <div><div><div></div></div><div><div></div></div></div> <div><div><div></div></div><div><div></div></div></div> <div><div><div></div></div><div><div></div></div></div> <div><div><div></div></div><div><div></div></div></div> <div><div><div></div></div><div><div></div></div></div> <div><div><div></div></div><div><div></div></div></div> <div><div><div></div></div><div><div></div></div></div> <div><div><div></div></div><div><div></div></div></div> <div><div><div></div></div><div><div></div></div></div> <div><div><div></div></div><div><div></div></div></div> <div><div><div></div></div><div><div></div></div></div> <div><div><div></div></div><div><div></div></div></div> <div><div><div></div></div><div><div></div></div></div> <div><div><div></div></div><div><div></div></div></div> <div><div><div></div></div><div><div></div></div></div> <div><div><div></div></div><div><div></div></div></div> <div><div><div></div></div><div><div></div></div></div> <div><div><div></div></div><div><div></div></div></div> <div><div><div></div></div><div><div></div></div></div> <div><div><div></div></div><div><div></div></div></div> <div><div><div></div></div><div><div></div></div></div> <div><div><div></div></div><div><div></div></div></div> <div><div><div></div></div><div><div></div></div></div> <div><div><div></div></div><div><div></div></div></div> <div><div><div></div></div><div><div></div></div></div> <div><div><div></div></div><div><div></div></div></div> <div><div><div></div></div><div><div></div></div></div> <div><div><div></div></div><div><div></div></div></div> <div><div><div></div></div><div><div></div></div></div> <div><div><div></div></div><div><div></div></div></div> <div><div><div></div></div><div><div></div></div></div> <div><div><div></div></div><div><div></div></div></div> <div><div><div></div></div><div><div></div></div></div> <div><div><div></div></div><div><div></div></div></div> <div><div><div></div></div><div><div></div></div></div> <div><div><div></div></div><div><div></div></div></div> <div><div><div></div></div><div><div></div></div></div> <div><div><div></div></div><div><div></div></div></div> <div><div><div></div></div><div><div></div></div></div> <div><div><div></div></div><div><div></div></div></div> <div><div><div></div></div><div><div></div></div></div> <div><div><div></div></div><div><div></div></div></div> <div><div><div></div></div><div><div></div></div></div> <div><div><div></div></div><div><div></div></div></div> <div><div><div></div></div><div><div></div></div></div> <div><div><div></div></div><div><div></div></div></div> <div><div><div></div></div><div><div></div></div></div> <div><div><div></div></div><div><div></div></div></div> <div><div><div></div></div><div><div></div></div></div> <div><div><div></div></div><div><div></div></div></div> <div><div><div></div></div><div><div></div></div></div> <div><div><div></div></div><div><div></div></div></div> <div><div><div></div></div><div><div></div></div></div> <div><div><div></div></div><div><div></div></div></div> <div><div><div></div></div><div><div></div></div></div> <div><div><div></div></div><div><div></div></div></div> <div><div><div></div></div><div><div></div></div></div> <div><div><div></div></div><div><div></div></div></div> <div><div><div></div></div><div><div></div></div></div> <div><div><div></div></div><div><div></div></div></div> <div><div><div></div></div><div><div></div></div></div> <div><div><div></div></div><div><div></div></div></div> <div><div><div></div></div><div><div></div></div></div> <div><div><div></div></div><div><div></div></div></div> <div><div><div></div></div><div><div></div></div></div> <div><div><div></div></div><div><div></div></div></div> <div><div><div></div></div><div><div></div></div></div> <div><div><div></div></div><div><div></div></div></div> <div><div><div></div></div><div><div></div></div></div> <div><div><div></div></div><div><div></div></div></div> <div><div><div></div></div><div><div></div></div></div> <div><div><div></div></div><div><div></div></div></div> <div><div><div></div></div><div><div></div></div></div> <div><div><div></div></div><div><div></div></div></div> <div><div><div></div></div><div><div></div></div></div> <div><div><div></div></div><div><div></div></div></div> <div><div><div></div></div><div><div></div></div></div> <div><div><div></div></div><div><div></div></div></div> <div><div><div></div></div><div><div></div></div></div> <div><div><div></div></div><div><div></div></div></div> <div><div><div></div></div><div><div></div></div></div> <div><div><div></div></div><div><div></div></div></div> <div><div><div></div></div><div><div></div></div></div> <div><div><div></div></div><div><div></div></div></div> <div><div><div></div></div><div><div></div></div></div> <div><div><div></div></div><div><div></div></div></div> <div><div><div></div></div><div><div></div></div></div> <div><div><div></div></div><div><div></div></div></div> <div><div><div></div></div><div><div></div></div></div> <div><div><div></div></div><div><div></div></div></div> <div><div><div></div></div><div><div></div></div></div> <div><div><div></div></div><div><div></div></div></div> <div><div><div></div></div><div><div></div></div></div> <div><div><div></div></div><div><div></div></div></div> <div><div><div></div></div><div><div></div></div></div> <div><div><div></div></div><div><div></div></div></div> <div><div><div></div></div><div><div></div></div></div> <div><div><div></div></div><div><div></div></div></div> <div><div><div></div></div><div><div></div></div></div> <div><div><div></div></div><div><div></div></div></div> <div><div><div></div></div><div><div></div></div></div> <div><div><div></div></div><div><div></div></div></div> <div><div><div></div></div><div><div></div></div></div> <div><div><div></div></div><div><div></div></div></div> <div><div><div></div></div><div><div></div></div></div> <div><div><div></div></div><div><div></div></div></div> <div><div><div></div></div><div><div></div></div></div> <div><div><div></div></div><div><div></div></div></div> <div><div><div></div></div><div><div></div></div></div> <div><div><div></div></div><div><div></div></div></div> <div><div><div></div></div><div><div></div></div></div> <div><div><div></div></div><div><div></div></div></div> <div><div><div></div></div><div><div></div></div></div> <div><div><div></div></div><div><div></div></div></div> <div><div><div></div></div><div><div></div></div></div> <div><div><div></div></div><div><div></div></div></div> <div><div><div></div></div><div><div></div></div></div> <div><div><div></div></div><div><div></div></div></div> <div><div><div></div></div><div><div></div></div></div> <div><div><div></div></div><div><div></div></div></div> <div><div><div></div></div><div><div></div></div></div> <div><div><div></div></div><div><div></div></div></div> <div><div><div></div></div><div><div></div></div></div> <div><div><div></div></div><div><div></div></div></div> <div><div><div></div></div><div><div></div></div></div> <div><div><div></div></div><div><div></div></div></div> <div><div><div></div></div><div><div></div></div></div> <div><div><div></div></div><div><div></div></div></div> <div><div><div></div></div><div><div></div></div></div> <div><div><div></div></div><div><div></div></div></div> <div><div><div></div></div><div><div></div></div></div> <div><div><div></div></div><div><div></div></div></div> <div><div><div></div></div><div><div></div></div></div> <div><div><div></div></div><div><div></div></div></div> <div><div><div></div></div><div><div></div></div></div> <div><div><div></div></div><div><div></div></div></div> <div><div><div></div></div><div><div></div></div></div> <div><div><div></div></div><div><div></div></div></div> <div><div><div></div></div><div><div></div></div></div> <div><div><div></div></div><div><div></div></div></div> <div><div><div></div></div><div><div></div></div></div> <div><div><div></div></div><div><div></div></div></div> <div><div><div></div></div><div><div></div></div></div> <div><div><div></div></div><div><div></div></div></div> <div><div><div></div></div><div><div></div></div></div> <div><div><div></div></div><div><div></div></div></div> <div><div><div></div></div><div><div></div></div></div> <div><div><div></div></div><div><div></div></div></div> <div><div><div></div></div><div><div></div></div></div> <div><div><div></div></div><div><div></div></div></div> <div><div><div></div></div><div><div></div></div></div> <div><div><div></div></div><div><div></div></div></div> <div><div><div></div></div><div><div></div></div></div> <div><div><div></div></div><div><div></div></div></div> <div><div><div></div></div><div><div></div></div></div> <div><div><div></div></div><div><div></div></div></div> <div><div><div></div></div><div><div></div></div></div> <div><div><div></div></div><div><div></div></div></div> <div><div><div></div></div><div><div></div></div></div> <div><div><div></div></div><div><div></div></div></div> <div><div><div></div></div><div><div></div></div></div> <div><div><div></div></div><div><div></div></div></div> <div><div><div></div></div><div><div></div></div></div> <div><div><div></div></div><div><div></div></div></div> <div><div><div></div></div><div><div></div></div></div> <div><div><div></div></div><div><div></div></div></div> <div><div><div></div></div><div><div></div></div></div> <div><div><div></div></div><div><div></div></div></div> <div><div><div></div></div><div><div></div></div></div> <div><div><div></div></div><div><div></div></div></div> <div><div><div></div></div><div><div></div></div></div> <div><div><div></div></div><div><div></div></div></div> <div><div><div></div></div><div><div></div></div></div> <div><div><div></div></div><div><div></div></div></div> <div><div><div></div></div><div><div></div></div></div> <div><div><div></div></div><div><div></div></div></div> <div><div><div></div></div><div><div></div></div></div> <div><div><div></div></div><div><div></div></div></div> <div><div><div></div></div><div><div></div></div></div> <div><div><div></div></div><div><div></div></div></</div>																	

Pushhandles: choose only one option

KRR030200	○ Omit push handles (L)	-
KRR030201	○ Push handles long	-
KRR030203	□ Fold-down push handles (from 325mm backrest-height)	186 €
KRR030204	□ Height adj. push handles (+) (only with Standard backrest; from 325mm backrest height)	295 €
KRR030205	□ Height adj. push handles for Jay backs (+) (only with Standard backrest; from 325mm backrest height)	295 €

Backrest upholstery

KRR030316	○ EXO Backrest sling, padded, adjustable, 1 accessory bag, black (EXO Evo version) Colour, binding tape: ● Black ○ Orange ○ Silver ○ Red ○ Blue	- -
KRR030317	□ EXO PRO Backrest, padded, adj., breathable spacer fabric, 1 accessory bag, black (EXO Evo version) Colour, binding tape: ● Black ○ Orange ○ Silver ○ Red ○ Blue	170 € -
KRR030005	□ EXO superlight, padded, adjustable, black (EXO Evo version) (L) Colour, binding tape: ● Black ○ Orange ○ Silver ○ Red ○ Blue	170 € -
KRR030300	○ Without backrest upholstery	-

(1): Max. user weight 85 kg, only available up to seat-width 400 mm
 (2): Not with height adj push handles, not with Jay J3 backs, not with positioning-belt
 (L)= lightest option (+)= adds 500 g or more to the wheelchair-weight

For more information
www.SunriseMedical.eu
 © Sunrise Medical 2024

SEAT UPHOLSTERIES AND CUSHIONS



KRR020012 Seat sling, airflow



KRR020019 Seat sling, airflow, superlight

BACKREST



KRR030006
Carbon Backrest



KRR030102
Backrest, angle-adjustable, lock when folded



KRR030201
Push handles long



KRR030203
Push handles, fold-down



KRF030005
EXO superlight backrest sling (EXO Evo version)



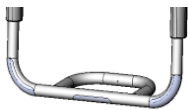
KRF030316
EXO backrest sling (EXO Evo)



KRF030317
EXO PRO backrest sling (EXO Evo version)



FOOTREST AND FOOTPLATES



KRR050029
Tubular footrest lightweight



KRR050025
Platform footrest LW composite plate



KRR050026
Platform footrest LW carbon plate



KRR050125
Performance footrest alu angle adj



KRR050127
Foot positioning plate

Krypton R								Price in €		
● = Standard				○ = No cost option				□ = Cost option		
JAY 3 BACKS AND ACCESSORIES - only with Standard backrest (+)										
Jay 3 Back - Shallow Contour										
Mid Thoracic:				□ JAY030010	Medium - 340 mm	□ JAY030033	Tall - 380 mm	846 €		
Upper Thoracic:				□ JAY030012	Short - 420 mm	□ JAY030019	Medium - 460 mm	□ JAY030025	Tall - 500 mm	
Shoulder Height:				□ JAY030015	Short - 530 mm	□ JAY030022	Medium - 570 mm	□ JAY030028	Tall - 610 mm	
1.006 €										
Jay 3 Back - Mid Contour										
Mid Thoracic:				□ JAY030011	Medium - 340 mm	□ JAY030018	Tall - 380 mm	926 €		
Upper Thoracic:				□ JAY030013	Short - 420 mm	□ JAY030020	Medium - 460 mm	□ JAY030026	Tall - 500 mm	
Shoulder Height:				□ JAY030016	Short - 530 mm	□ JAY030023	Medium - 570 mm	□ JAY030029	Tall - 610 mm	
1.033 €										
1.087 €										
Jay 3 Carbon Back - Shallow Contour										
Lower Thoracic:				□ JAY060001	Short - 170 mm	□ JAY060002	Tall - 240 mm	1.316 €		
Mid Thoracic:				□ JAY060003	Short - 300 mm	□ JAY060004	Tall - 380 mm	1.316 €		
Accessories for JAY J3 Backs										
WHT030415				□ Whitmyer Headrest, COBRA XTRA, flip back				(only with Jay 3 backs)	538 €	
WHT030416				□ Whitmyer Headrest, AXYS, Standard				(only with Jay 3 backs)	322 €	
JAY090058				□ JAY Accessory bag				(only with Jay 3 Carbon backs)	87 €	
SIDEGUARDS AND ARMRESTS										
KRR040101				□ Sideguard, carbon fibre, slim, black				(1)	(L)	-
KRR040102				□ Sideguard, aluminium, cold weather protection (colour: black, matt)						147 €
KRR040103				□ Sideguard, aluminium, fender, cold weather protection (colour: black, matt)				(min rear seat height 390 mm)	210 €	
KRR040104				□ Sideguard, carbon fibre, fender, cold weather protection, black				(min rear seat height 390 mm)	287 €	
KRR040107				□ Sideguard, composite, removable, 21 cm high (31 cm long), black						-
KRR040052				□ Single-post sideguard, armpad (330 mm), depth adjustable, height-adjustable, removable				(2) (+)	252 €	
KRR040117				□ Tubular armrest, Alu, swing away (sideways), padded, removable				(+)	240 €	
KRR040000				○ w/o Sideguard						-
FOOTREST AND FOOTPLATES										
KRR050029				● Footrest, tubular, lightweight, aluminium				(L)	-	
KRR050030				□ Footrest, tubular, lightweight, aluminium, with cover						76 €
KRR050025				□ Platform footplate lightweight angle & depth adjustable composite						116 €
KRR050024				□ Platform footplate lightweight angle & depth adjustable aluminium (colour: black, matt)						116 €
KRR050026				□ Platform footplate lightweight angle & depth adjustable carbon						251 €
KRR050125				□ Performance footplate angle adjustable				(3)	240 €	
KRR050128				□ Footboard, platform, plastic, angle and depth adjustable, flip-up (to the back)				(4)	240 €	
KRR050127				□ Adjustable side protection, to create a side-stop on the footboard				(5)	68 €	
LOWER LEG LENGTH (LLL) Attention: LLL has to be 30 mm less than seat height front; all measurements in mm										
○ 360 ○ 370 ○ 380 ○ 390 ○ 400 ○ 410 ○ 420 ○ 430										
○ 440 ○ 450 ○ 460 ○ 470 ○ 480 ○ 490 ○ 500 ○ 510										
FRAME VERSIONS										
Frame length										
KRR010206				● Frame standard						Std
KRR010207				○ Frame long (20 mm additional frame length)				(not in combination with SD 480 mm)		-
Frame angle										
KRR010012				● 100° frame						Std
KRR010013				□ 92° Performance frame						153 €
Frame inset										
KRR010101				● Inset: Small (10 mm)						Std
KRR010103				□ Inset: Performance (30 mm)				(not available for seat width 320 mm)		153 €
Castor position (see explanation on next page)										
KRR010301				● Castor house position wide						-
KRR010302				○ Castor house position narrow (not with seat-depths < 400mm, please see recommendations on next page)						-
(1) With 24" rear wheel min. rear seat height 410 mm; with 25" rear wheel min. rear seat height 430 mm										
(2) Only with COG 56 mm										
(3) Not with SW 320 mm and 30 mm inset										
(4) User weight limitation 75 kg, not with 4" castor										
(5) Only for platform footplates lightweight angle & depth adjustable										
(L)= lightest option (+)= adds 500 g or more to the wheelchair-weight										
For more information www.SunriseMedical.eu © Sunrise Medical 2024										

SIDEGUARD & ARMREST



KRR040101 Slim style sideguard



KRR040104 Carbon fibre, cold weather protection, fender



KRR040107 Sideguard, composite, removable (black)



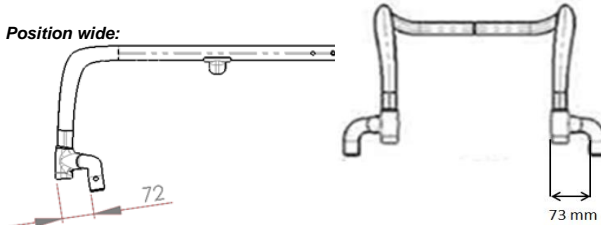
KRR040117 Tubular armrest, swing away, removable, padded



KRR040052 Single-post sideguard, armpad (33 cm)

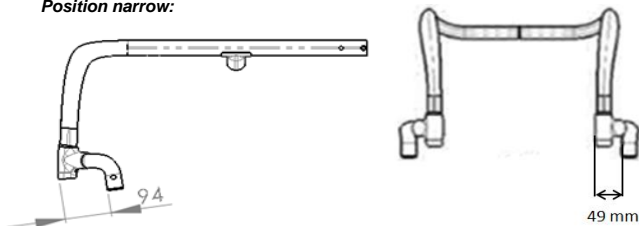
FRAME VERSIONS: CASTOR HOUSE POSITIONS

Position wide:



Further to the front and wider position of the casters for optimized rolling resistance

Position narrow:



22 mm further rearwards and 24 mm per side more narrow position of the casters for a more narrow front-end and improved manoeuvrability in tight spaces. Reduced front-stability compared to **position wide**, we recommend this option in combination with seat-height differences (front to rear) of 40mm or more or in combination with KRR010207 "frame, long".



KRR010301 Castor house position wide



KRR010302 Castor house position narrow



Castor house position wide vs. narrow

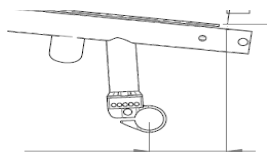
Krypton R

● = Standard ○ = No cost option □ = Cost option

Price in €

CENTRE OF GRAVITY (COG) - all measurements are in mm; measured from front of back post; choose only one option

COG56	○ 56 mm
COG68	○ 68 mm
COG80	○ 80 mm
COG92	○ 92 mm
COG104	○ 104 mm



FRAME ACCESSORIES

KRR090031	□ Suspension up to 70 kg	(1) (+)	(chair will be built using aluminium axle-stems and axle-tube)	574 €
KRR090032	□ Suspension up to 120 kg	(1) (+)	(chair will be built using aluminium axle-stems and axle-tube)	574 €
Tip assist (step tube) (2)				
KRR090001	□ Left	KRR090002	□ Right	68 €
KRR090003	□ Pair	(+)	(not available with anti-tip)	137 €
KRR090009	□ Crutch holder		(only in combination with tip assist)	39 €
Anti-tip tubes swing-away (2)				
KRR090004	□ Left	KRR090005	□ Right	159 €
KRR090006	□ Pair	(+)	(not available with tip-assist)	317 €
KRR090007	□ Quickie style anti-tip tubes pluggable	(2) (+)	(Pair)	155 €
Anti tip flip up (user operated) (2)				
KRR090033	□ Left	KRR090008	□ Right	206 €
KRR090010	□ Transit wheels	(2) (+)	(Please choose only one)	272 €
KRR090016	□ Frame protection, black		(textile, with velcro)	70 €
KRR090577	□ Frame protection, Plastic, glued to the frame, black			163 €

FORKS

(compare with your choice on the first page)

KRR080013	○ Castor fork, Carbotecture ®, 111mm	Colour: Black (L)	-
	Colour: □ Silver □ Orange □ Red (3) □ Blue (3)		50 €
KRR080029	○ Castor fork, Aluminium, 123mm	Colour: Black	
	Colour: □ Silver □ Orange		50 €
KRR080008	□ Castor fork, aluminium, one-arm	Colour: Black (only with 4" & 5" Alu soft, Alu solid)	206 €
	Colour: □ Silver □ Orange □ Red □ Blue		50 €
KRR080007	□ Castor fork, aluminium, suspension (Frog Legs ®), black	(+)	617 €

CASTORS

(compare with your choice on the first page)

KRR080301	○ Castor, solid (hard), rim: composite, black	(3"-6", not with One arm fork)	-
KRR080302	○ Castor, solid (soft), rim: composite, black	(only 5" and 6", not with One arm fork)	-
KRR080303	□ Castor, solid (hard), light-up, rim: composite, black	(not available in 6", not with One arm fork)	72 €
KRR080304	□ Castor, solid (hard), rim: aluminium	Colour, rim: Silver (only 4" and 5")	98 €
KRR080306	□ Castor, solid (soft), rim: aluminium	Colour, rim: Silver (only 4" and 5")	148 €
	Colour, rim: □ Black □ Orange □ Red □ Blue		50 €

REAR WHEELS

(compare with your choice on the first page; choose only one wheel type)

NOTE: for users with higher user weight than 100 kg, we recommend cross spoked wheels

KRR070000	○ Without rear wheel	-
KRR070001	○ Rear wheel, Universal, 36 spokes (silver), cross-wise spokes	(+)
KRR070002	○ Rear wheel, Design, 36 spokes (silver), straight spokes	(only 24")
KRR070003	○ Rear wheel, Lightweight, 24 spokes (silver), straight spokes	(Std.: black hub/rim; colour options last page)
KRR070004	□ Rear wheel, Proton, 24 spokes (black), straight spokes	(L) r weight limit 100kg)
KRR070005	□ Rear wheel, Spinergy, 18 spokes (black), straight spokes; hub: silver	
KRR070007	□ Rear wheel, Spinergy, 12 spokes (black), straight spokes, hub black	

(1): Not possible with carbon axle-stems and axle: chair will be built with aluminium axle-stems and axle-tube
 (2): Not with KRR07049: camber adapter 0°, superlight.
 (3): Red and blue only in combination with soft castor
 (L)= lightest option (+)= adds 500 g or more to the wheelchair-weight

For more information
www.SunriseMedical.eu
 © Sunrise Medical 2024

FRAME ACCESSORIES



KRR090032
Suspension



KRR090001
Tip assist



KRR090004
Anti-tip tubes SA



KRR090007
Quickie style anti tip tubes pluggable



KRR090033
Anti tip flip up (user operated)



KRR090010
Transit Wheels



KRR090010
Frame protection, Plastic, glued to the frame, black

FORKS



KRR080013 & KRR080306
Castor fork, Carbotecture & Castor solid (soft) aluminum



KRR080008
Castor fork, aluminum, one-arm, red

REAR WHEELS & HANDRIMS



KRR070001
Universal wheel



KRR070002
Design wheel



KRR070003
Lightweight wheel



KRR070004
Proton wheel



KRR070212
Handrims, Ellipse 3R



KRR070208
Handrims Maxgrepp

TYRES



KRR070101
Schwalbe Right Run



KRR070107
Schwalbe One



KRR070104
Schwalbe Marathon Plus



KRR070102
Tyre, puncture proof

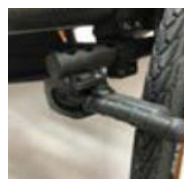
WHEEL LOCKS



KRR060001
Standard brake



KRR060002
Knee lever brake



KRR060023
Compact brake EVO



KRR060024
Lightweight compact brake EVO

Krypton R			
● = Standard ○ = No cost option □ = Cost option		Price in €	
TYRES			(choose only one tyre type)
KRR070101	○ Tyre, pneumatic, fine profile, Schwalbe Right Run	(not in 25")	-
KRR070107	□ Tyre, pneumatic, slick, Schwalbe One	(L)	53 €
KRR070102	○ Tyre, puncture proof, tread	(+)	-
KRR070104	□ Tyre, pneumatic, puncture proof, tread, Schwalbe Marathon Plus Evolution	(+)	54 €
KRR090163	□ Spares-kit: 1 extra tyre (same as on the chair) and 1 extra inner tube	(not with solid tyres)	67 €
HANDRIMS			
KRR070201	○ Handrims, aluminium, powder-coated, clear	(L)	-
KRR070202	○ Handrims, aluminium, anodised, silver	(L)	-
KRR070203	□ Handrims, aluminium, powder-coated, coloured	(L)	(select colour on last page) 68 €
KRR070204	○ Handrims, stainless steel, silver	(+)	-
KRR070205	□ Handrims, titanium, untreated		248 €
KRR070206	□ Handrims, titanium, powder-coated, clear		248 €
KRR070207	□ Handrims, Supergrip®	(+)	351 €
KRR070208	□ Handrims, Maxgrepp®	(+)	(only 24") 463 €
KRR070212	□ Handrims, Ellipse 3R, black	(+)	(ergonomic handrims with rubber-strip) 368 €
KRR070250	□ Handrim cover, rubber	(not with 25")	133 €
Hand rim mounting			
KRR070307	□ Handrim mount, super narrow (7 mm)	(only with stainless steel)	126 €
KRR070317	● Handrim mount, narrow (17 mm)		Std
KRR070327	○ Handrim mount, wide (27 mm)		-
WHEEL CAMBER			(choose only one option)
KRR070049	□ 0° superlight, no width-adjustment	(1) (L)	50 €
KRR070600	○ 0° width-adjustment +/-15mm		-
KRR070603	○ 3° width-adjustment +/-15mm		-
SPOKE GUARDS (only available in 24") (+)			
KRR070831	□ Transparent		192 €
KRR070813	□ Galactica		255 €
KRR070823	□ Princess	KRR070818 □ Jungle Fever	255 €
KRR070816	□ Happy Lions	KRR070811 □ Feather	255 €
KRR070819	□ Monkeys	KRR070821 □ Pirates	255 €
KRR070820	□ Oriental	KRR070806 □ Chrome wheel	255 €
KRR070829	□ Superhero	KRR070814 □ Graffiti	255 €
KRR070817	□ Hot wheels	KRR070802 □ Basketball	KRR07080 □ Basketball 2 255 €
KRR070822	□ Pool	KRR070812 □ Flying water	255 €
KRR070827	□ Silk	KRR070828 □ Space	255 €
KRR070830	□ Tiger	KRR070833 □ Zebra	255 €
WHEEL LOCKS (Choose only one option)			
KRR060001	● Standard wheel lock		Std
KRR060002	□ Knee lever wheel lock		64 €
KRR060010	□ Extension for knee lever wheel lock, slip-on, swing-away	(only with KRR060002)	30 €
KRR060023	□ Compact wheel lock EVO		92 €
KRR060024	□ Lightweight compact brake EVO	(2) (L)	124 €
KRR060006	□ One arm wheel lock (left hand actuation)	(+)	206 €
KRR060007	□ One arm wheel lock (right hand actuation)	(+)	206 €
ACCESSORIES			
KRR090000	● Tool kit		Std
KRR090024	□ High pressure pump		87 €
KRR090025	□ Air pump		16 €
KRR090026	□ Mobile phone pocket		26 €
KRR090030	□ Back pack		78 €
(1): Camber adapter glued into the axle-tube. No adjustment of the track-width possible.			For more information www.SunriseMedical.eu © Sunrise Medical 2024
(2): Adjustment of COG ± 2 cm on a chair in the field.			
(L)= lightest option (+)= adds 500 g or more to the wheelchair-weight			

Krypton R

● = Standard ○ = No cost option □ = Cost option

COLOURS FOR HANDRIMS AND HUB/ RIM OF THE STANDARD WHEEL

	Handrim (2)	Hub/rim (1)		Handrim (2)	Hub/rim (1)
	68 €	186		68 €	186
02 Brilliant Silver	<input type="checkbox"/>	<input type="checkbox"/>	27 Graphitemetallic	<input type="checkbox"/>	<input type="checkbox"/>
03 Silver Matt	<input type="checkbox"/>	<input type="checkbox"/>	29 Black	<input type="checkbox"/>	<input type="checkbox"/>
06 Sun Yellow	<input type="checkbox"/>	<input type="checkbox"/>	31 Matt Black	<input type="checkbox"/>	<input type="checkbox"/>
14 Blue	<input type="checkbox"/>	<input type="checkbox"/>	32 Signal White	<input type="checkbox"/>	<input type="checkbox"/>
15 Brilliant Marine	<input type="checkbox"/>	<input type="checkbox"/>	33 Pink	<input type="checkbox"/>	<input type="checkbox"/>
16 Matt Marine	<input type="checkbox"/>	<input type="checkbox"/>	34 Dark Chocolate Metallic	<input type="checkbox"/>	<input type="checkbox"/>
19 Brilliant Purple	<input type="checkbox"/>	<input type="checkbox"/>	35 Skyblue	<input type="checkbox"/>	<input type="checkbox"/>
21 Red Ruby	<input type="checkbox"/>	<input type="checkbox"/>	36 Cyan-Metallic	<input type="checkbox"/>	<input type="checkbox"/>
22 Brilliant Red	<input type="checkbox"/>	<input type="checkbox"/>	37 Marsred (Orange)	<input type="checkbox"/>	<input type="checkbox"/>
23 Matt Red	<input type="checkbox"/>	<input type="checkbox"/>	40 Kiwi	<input type="checkbox"/>	<input type="checkbox"/>
24 Tutti Frutti Orange	<input type="checkbox"/>	<input type="checkbox"/>	41 Flamingo-Glitter	<input type="checkbox"/>	<input type="checkbox"/>
	<input type="checkbox"/>	<input type="checkbox"/>	42 Matt-Anthracite	<input type="checkbox"/>	<input type="checkbox"/>
	<input type="checkbox"/>	<input type="checkbox"/>	46 Mamba Green (new)	<input type="checkbox"/>	<input type="checkbox"/>

(1) Only with universal cross spoked rear wheels

(2) only with KRR070203, handrim aluminium, powder coated

FRAME-COLOURS

KRR100139	<input type="checkbox"/> Natural Carbon, no coating	-
KRR100137	<input type="checkbox"/> Transparent, gloss	573 €
KRR100138	<input type="checkbox"/> Transparent, matt	573 €
KRR100122	<input type="checkbox"/> Black (gloss)	573 €
KRR100123	<input type="checkbox"/> Matte black	573 €

FRAME-GRAPHICS "Flying Pixel" (scratch resistant, non-removeable, includes the "Krypton" sticker)

KRR100590	<input type="checkbox"/> Frame graphics Flying Pixel, silver	222 €
KRR100591	<input type="checkbox"/> Frame graphics Flying Pixel, red	222 €
KRR100592	<input type="checkbox"/> Frame graphics Flying Pixel, blue	222 €

COLOUR STICKERS "SOPUR"/ "QUICKIE" and "Krypton" (3)

KRR100550	<input type="checkbox"/> black	-
KRR100551	<input type="checkbox"/> silver	-
KRR100552	<input type="checkbox"/> orange	-
KRR100553	<input type="checkbox"/> red	-
KRR100554	<input type="checkbox"/> blue	-

COLOURS FOR LIGHTWEIGHT WHEELS 24" (4)

KRR100336	<input type="checkbox"/> Rear wheel, lightweight anodized, orange (4)	186 €
KRR100337	<input type="checkbox"/> Rear wheel, lightweight anodized, blue (4)	186 €
KRR100338	<input type="checkbox"/> Rear wheel, lightweight anodized, red (4)	186 €

(3) No choice possible when frame graphics "Flying Pixel" are chosen.

(4) Anodised colours for hub and rim, black spokes. Only with light weight wheel in 24"

Comments for special build:



Krypton R - Base Price

Option price	
Packaging and transport	
Exclusive VAT	
VAT.	
Total Price	
Sunrise Medical Customer Service	
Address: Kahlbachring 2-4, D-69254 Malsch/Heidelberg	E-mail: export@sunrisemedical.de
Tel. +497253 980-0	Website: sunrisemedical.eu
Fax. +497253 980-222	

For more information
www.SunriseMedical.eu
 © Sunrise Medical 2024

FRAME COLOURS



1. *Transparent, gloss*
2. *Transparent, matt*
3. *Black, gloss*
4. *Black, matt*

FRAME GRAPHIC "FLYING PIXELS"



From left to right:

- *Frame graphics Flying Pixel, red*
- *Frame graphics Flying Pixel, silver*
- *Frame graphics Flying Pixel, blue*

24 " LIGHT WEIGHT WHEEL COLOURS



KRR100336
Lightweight wheel, anodized orange



KRR100337
Lightweight wheel, anodized blue



KRR100338
Lightweight wheel, anodized red